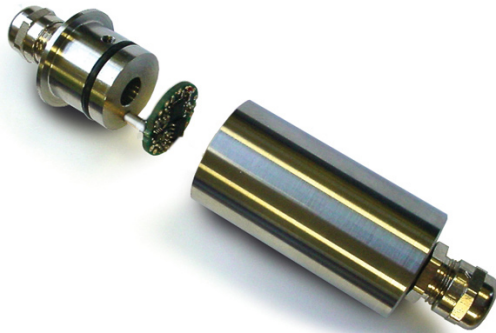


In-Line Housing for Load Cell Amplifiers (ICA) & Digital Converters (DCell)



Choice of either a load cell amplifier or digitiser to fit inside the stainless steel in-line housing

Introduction

This stainless steel in-line enclosure (ILE) will enable users to quickly convert any standard load cell output to 0-10 V, 4-20 mA or a RS485 digital output.

The very robust EMC protected IP67 enclosure for ICA's (load cell amplifiers) or DCells (Load Cell Digitizers), creating an easy method of converting a standard load cell to a conditioned output (digital load cells and 2 wire 4-20 mA load cells).

Specification at a Glance

- Converts standard load cell to a conditioned load cell
- Converts standard load cell to digital load cell
- IP67 barrel enclosure dimensions 56 x 28 mm excluding glands



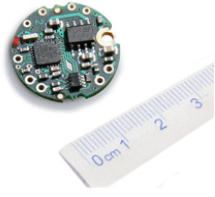
User Benefits

- Suitable for all ICAs
- Precision machined from stainless steel
- Small rugged construction
- EMC protected

Ideal Applications

- Automotive
- Agriculture
- Lifting & Handling

Related Product



DCell
Embedded digital load cell
converter, RS485, Modbus, CAN



DSC
Strain gauge data converter to
RS232. Modbus, CAN, RS885



EVAL KIT
Evaluations kits for DCell and DSC
are available for stress free set
up. Strain gauge data converter to
RS232. Modbus, CAN, RS885

For more information contact us today...

mantracourt.com
technical@mantracourt.com
Mantracourt Electronics Ltd
The Drive, Farringdon, Exeter,
Devon, EX5 2JB, UK
tel: +44 (0) 1395 232020
fax: +44 (0) 1395 233190



In the interests of continued product development, Mantracourt Electronics Limited reserves the right to alter product specifications without prior notice